

MONTHLY MEMBERSHIP PROGRESS REPORT

LOCATION INDIA

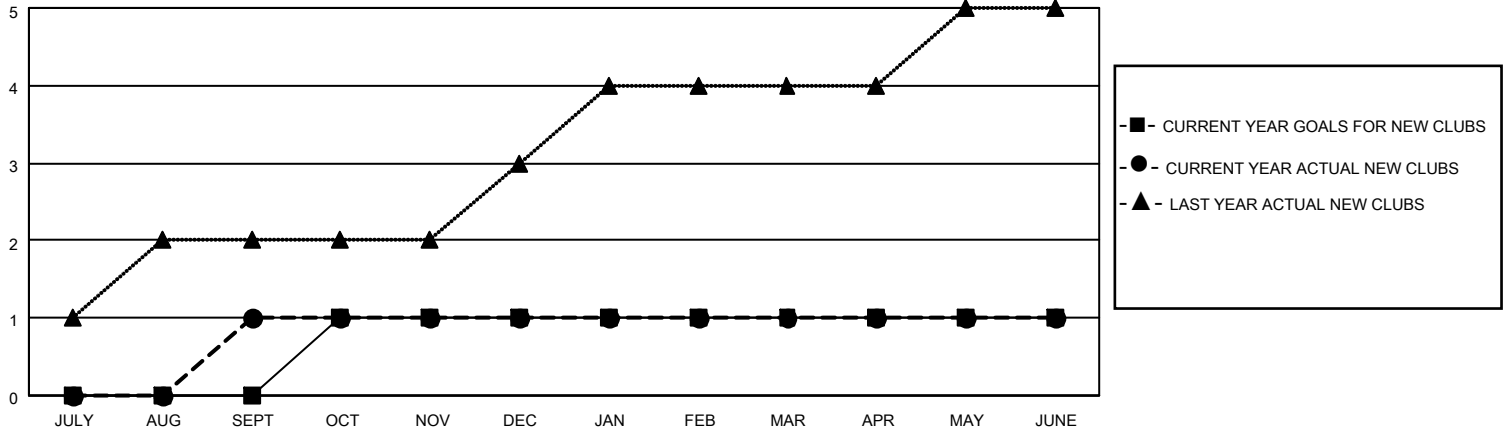
District 3232F2

Results as of: 6/30/2022

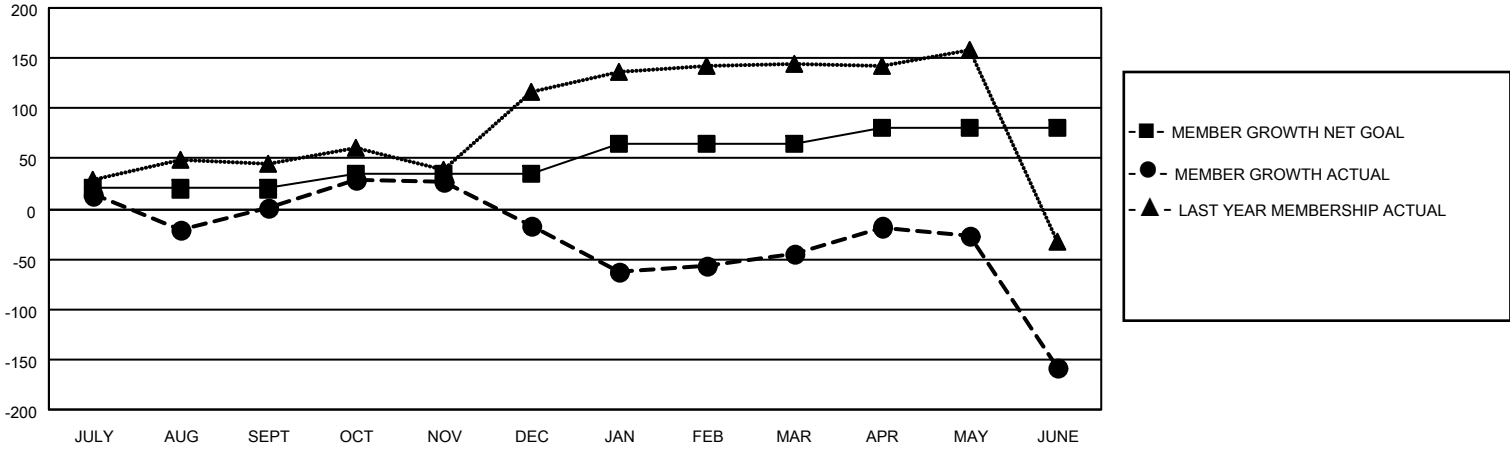
Clubs			
RESULTS FOR 2021-2022			
QUARTER	NEW CLUB GOAL	NEW CLUBS	DROPPED CLUBS
JULY/AUG/SEPT	0	1	3
OCT/NOV/DEC	1	0	0
JAN/FEB/MAR	0	0	1
APR/MAY/JUNE	0	0	1

Members			
RESULTS FOR 2021-2022			
QUARTER	MEMBER GROWTH NET GOAL	MEMBER GROWTH ACTUAL	DROPPED MEMBERS ACTUAL (including transfers)
JULY/AUG/SEPT	20	98	94
OCT/NOV/DEC	15	84	101
JAN/FEB/MAR	30	94	106
APR/MAY/JUNE	15	128	237

GOALS AND ACTUAL NEW CLUBS CUMULATIVE



GOALS AND ACTUAL MEMBERS CUMULATIVE



DROPPED CLUBS: 5

59 CLUBS OF 79 ADDED 1 OR MORE NEW MEMBERS

GENDER DISTRIBUTION

MALE	1,723 (63.11%)
FEMALE	1,006 (36.85%)
NON BINARY	0 (0.00%)
PREFER NOT TO ANSWER	1 (0.04%)

DROPPED MEMBERS

[CLICK HERE FOR CUMULATIVE MEMBERSHIP DATA](#)

DECEASED	8
CLUB CANCELLED	116
OTHER	414
TOTAL	538

TOTAL FAMILY UNIT MEMBERS 1,891

FAMILY MEMBERS PAYING HALF DUES 1,201